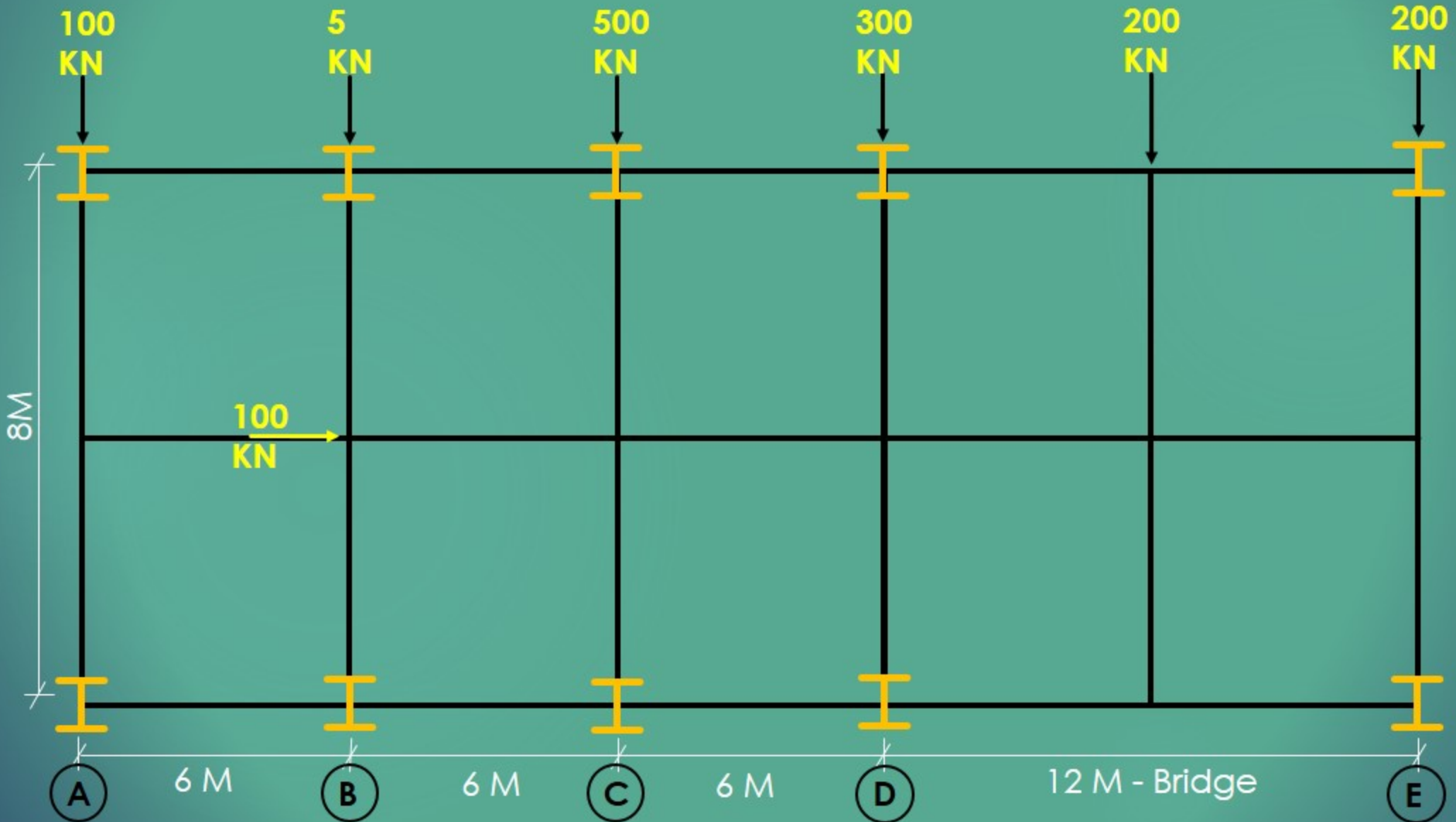


EZ LEARNING OF THE WEEK - 3

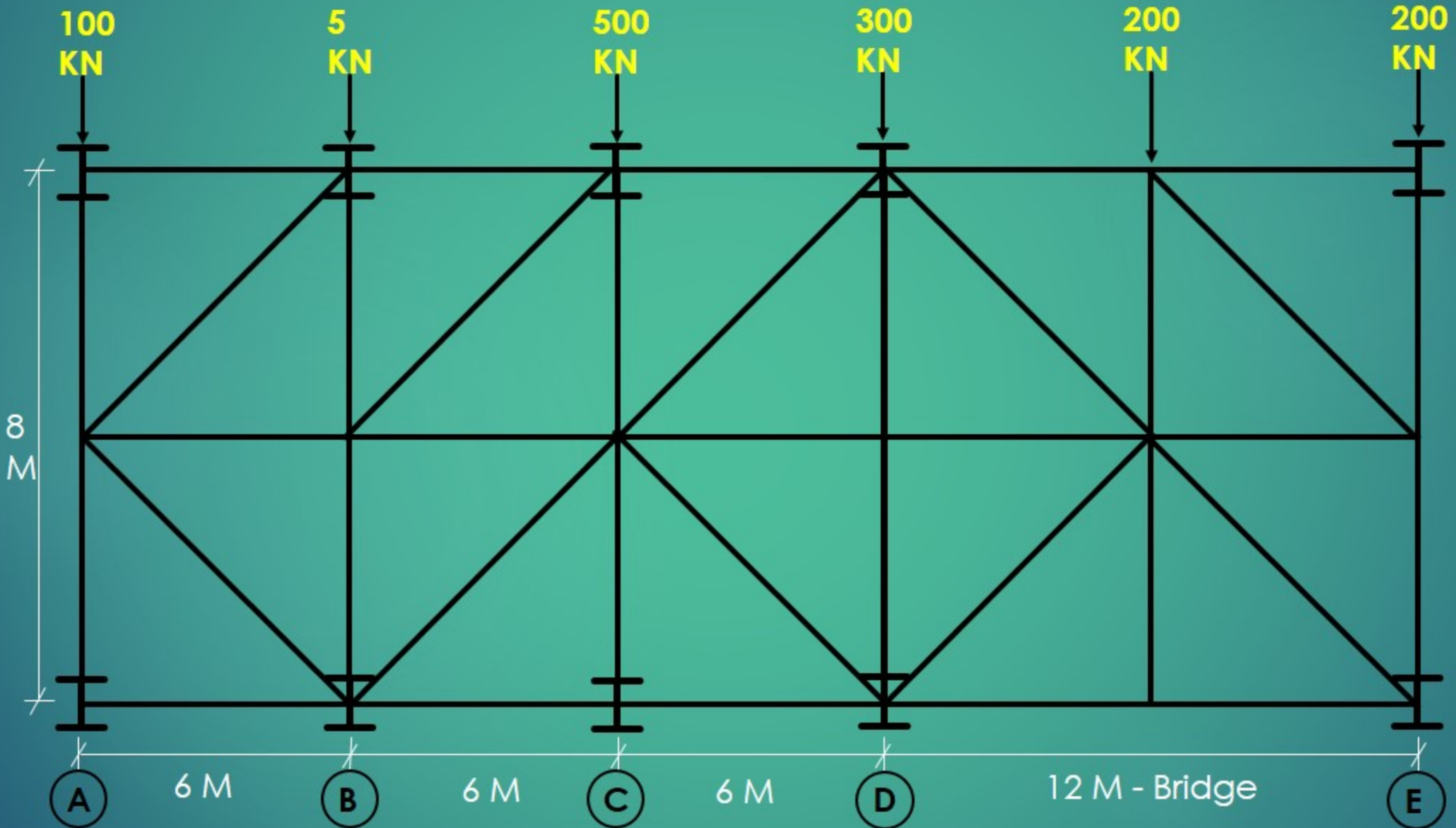


EZ Professional Training Institute

FOR STRUCTURAL PROFESSIONALS AND ACADEMIC STUDENTS



Option A



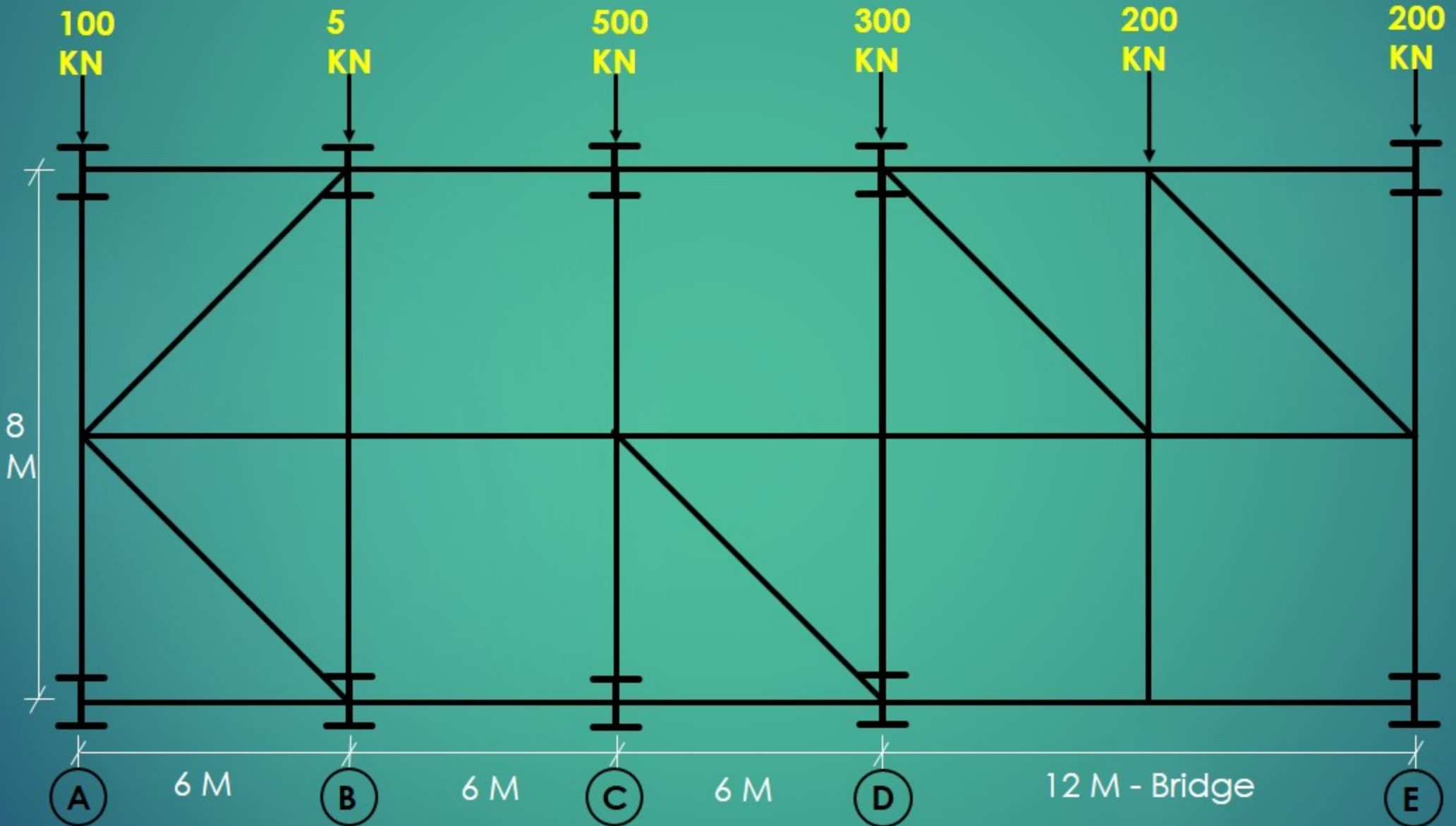
- Satish Jethwani

EZ Professional Training Institute

FOR STRUCTURAL PROFESSIONALS AND ACADEMIC STUDENTS



Option B



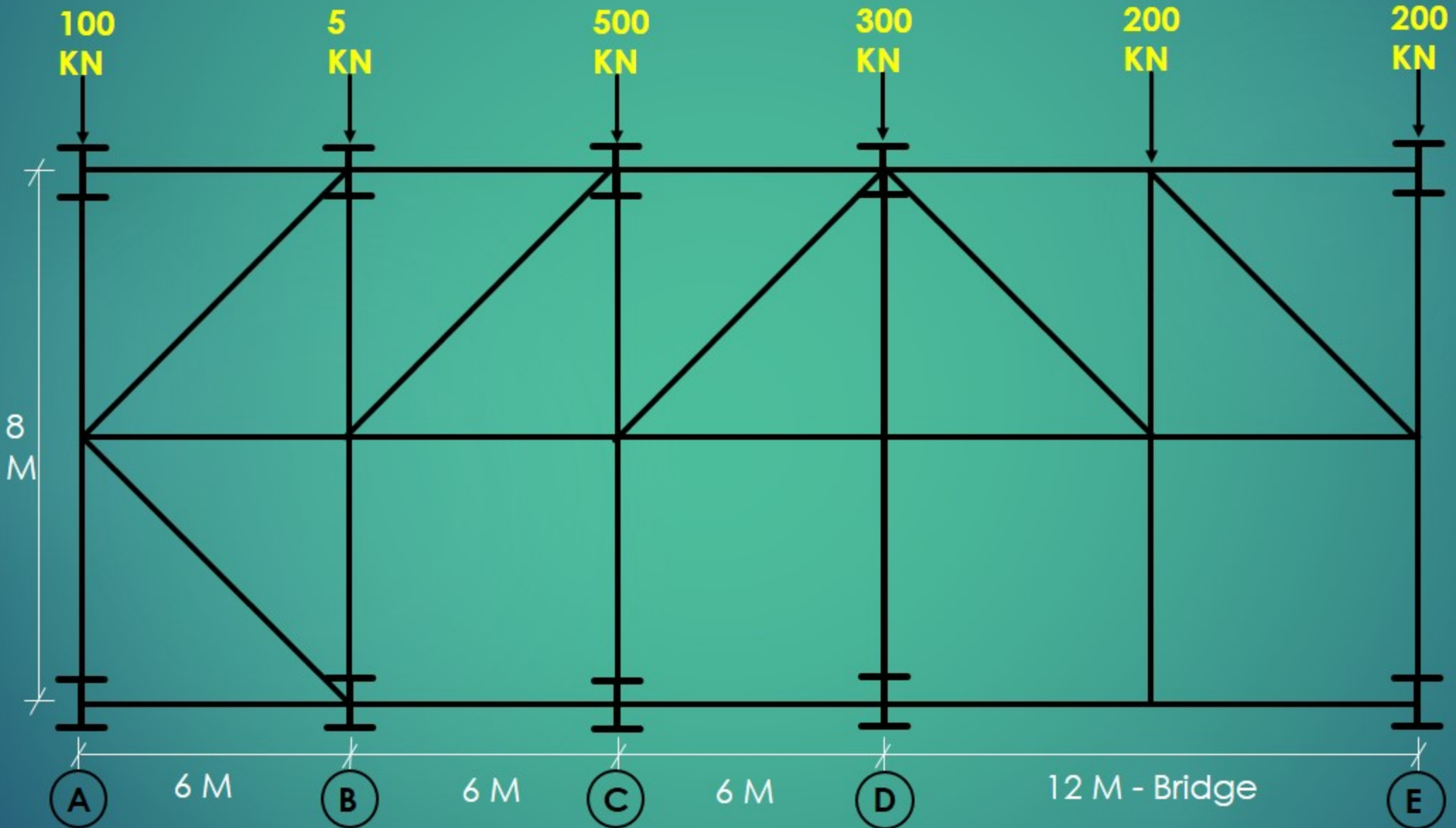
- Satish Jethwani

EZ Professional Training Institute

FOR STRUCTURAL PROFESSIONALS AND ACADEMIC STUDENTS



Option C



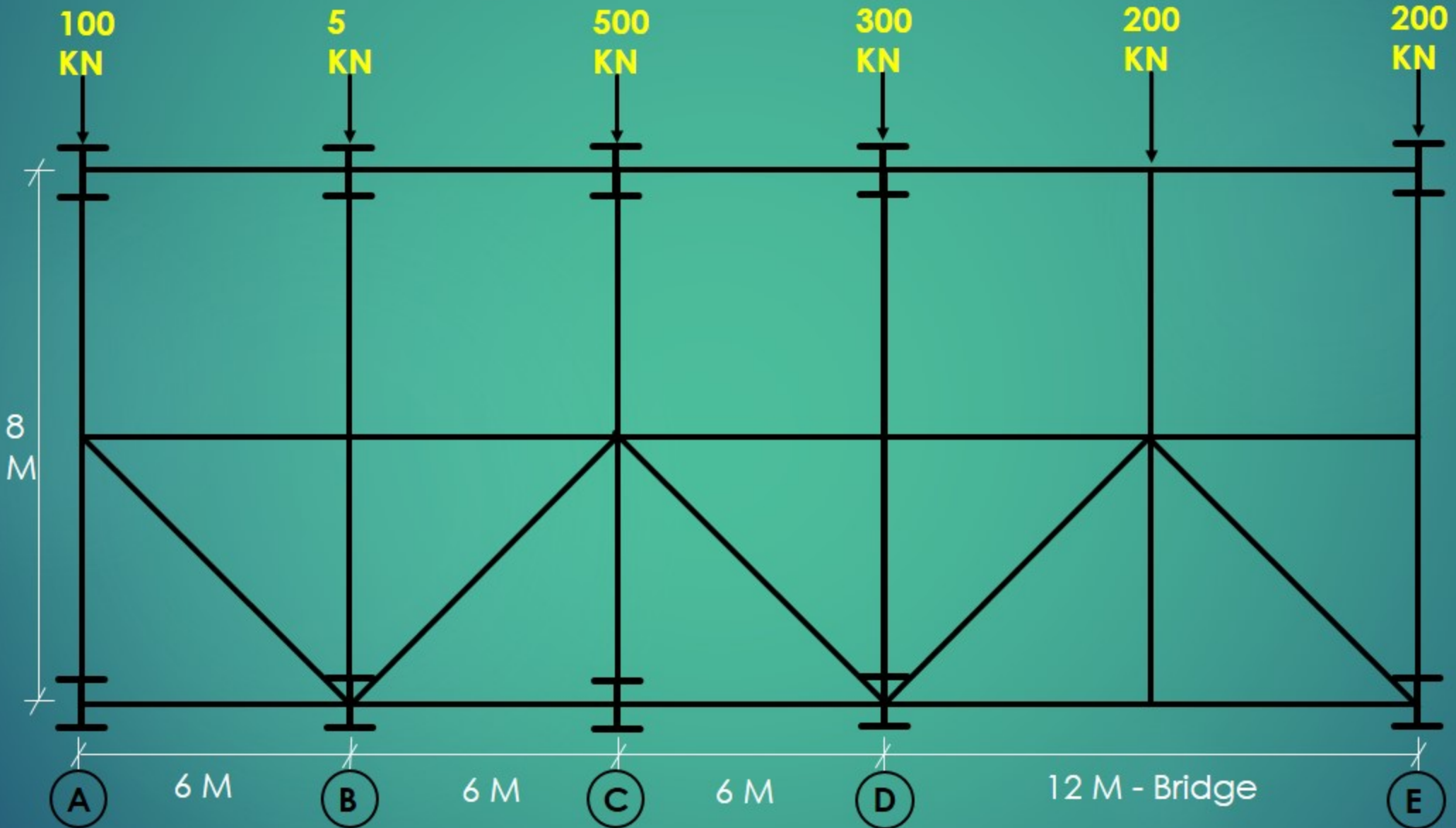
- Satish Jethwani

EZ Professional Training Institute

FOR STRUCTURAL PROFESSIONALS AND ACADEMIC STUDENTS



Option D



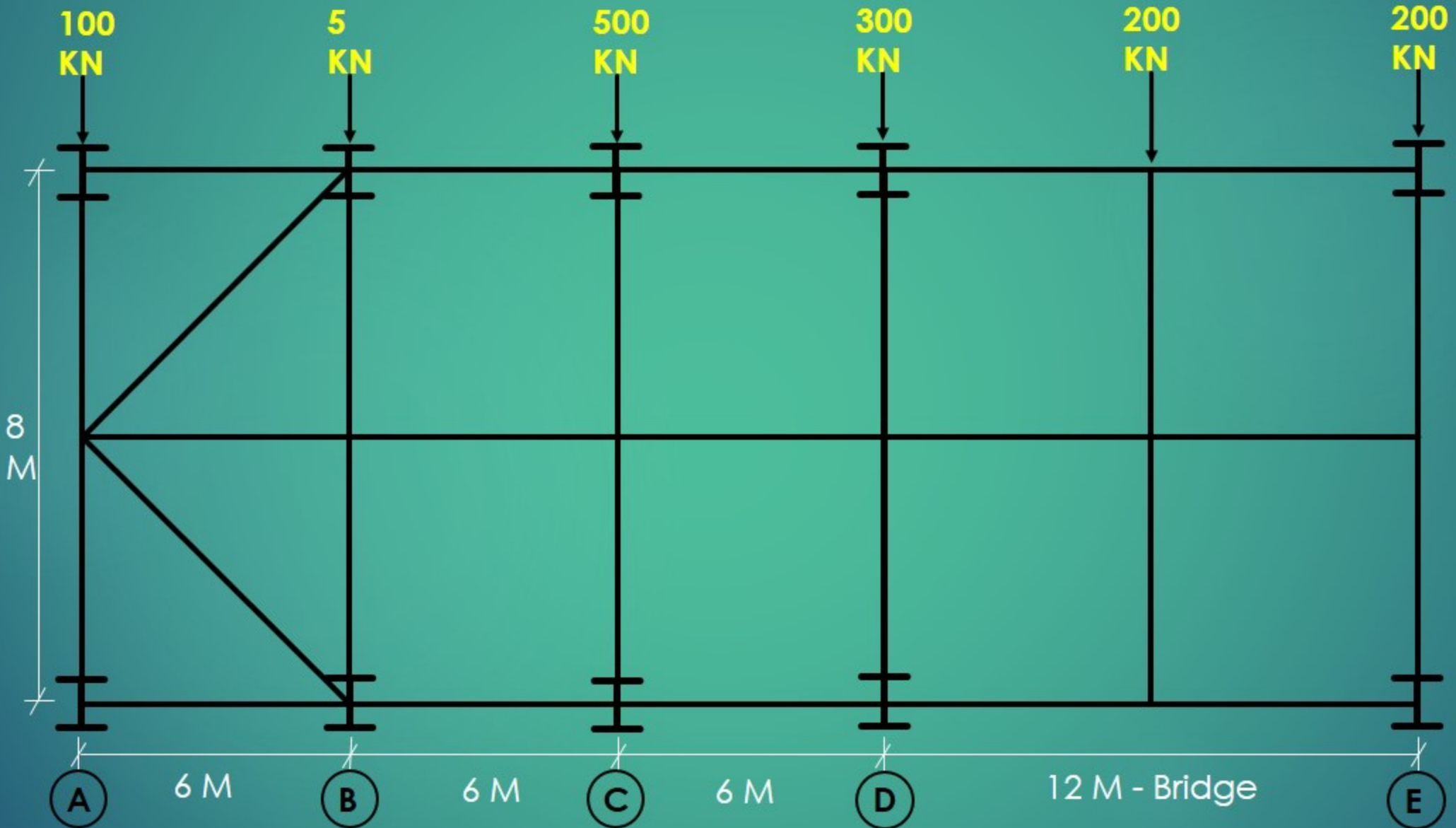
- Satish Jethwani

EZ Professional Training Institute

FOR STRUCTURAL PROFESSIONALS AND ACADEMIC STUDENTS



Option E



- Satish Jethwani

EZ Professional Training Institute

FOR STRUCTURAL PROFESSIONALS AND ACADEMIC STUDENTS



- This is Plan of Pipe Rack.
- The transverse bays carry Moment Connections.
- Longitudinal bay has Vertical Bracings between Grid C-D.
- Assume, There are no other loads than shown in the picture.
- Suggest one of the best configuration for **PLAN BRACINGS**.
Also explain the reason.
- Few of the options are shown here. Feel free to think beyond these options.